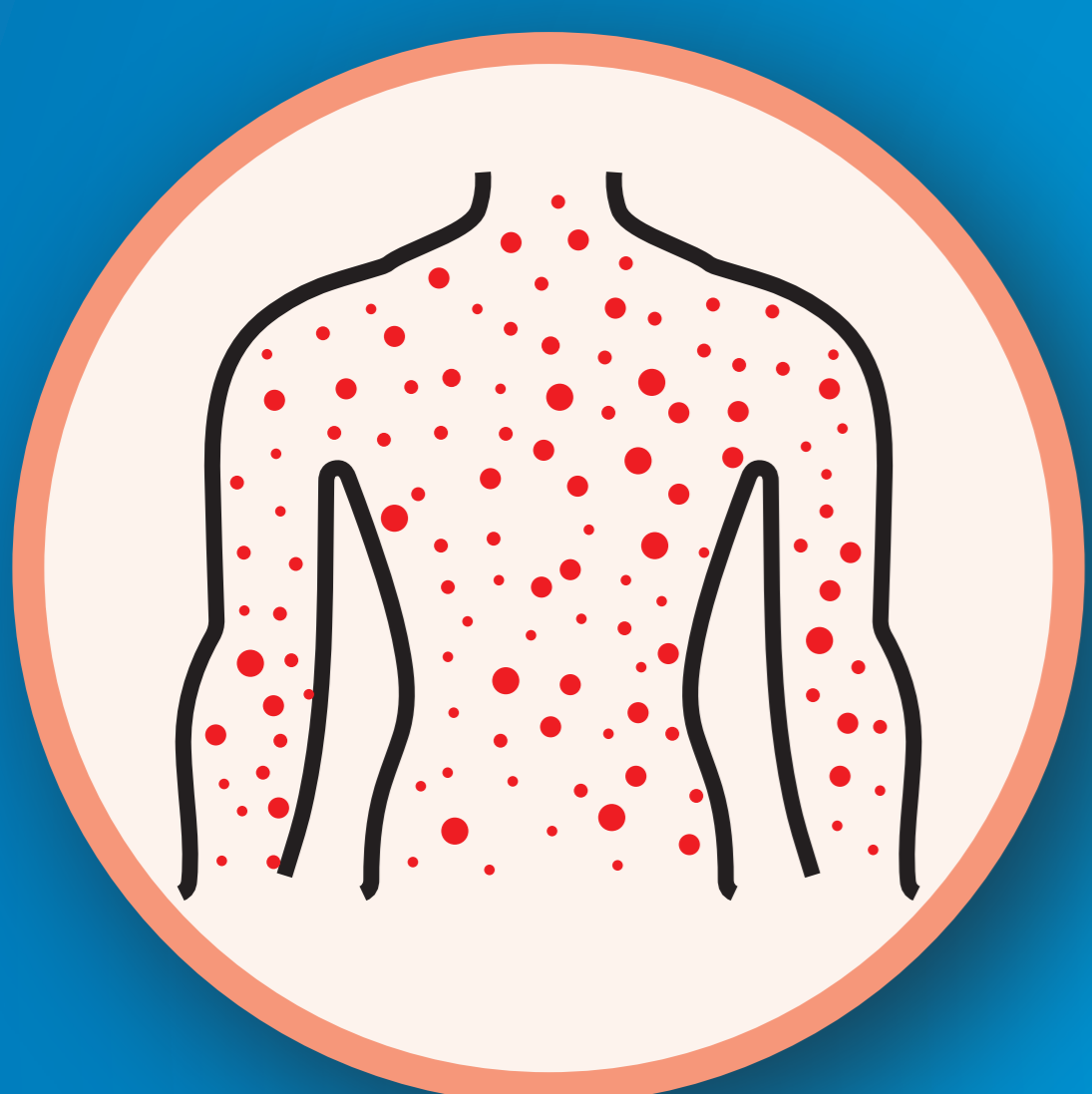


Mpox



is a viral disease transmitted through direct contact with infected persons including with their bodily fluids, contaminated personal items such as clothing, utensils or through sexual contact.

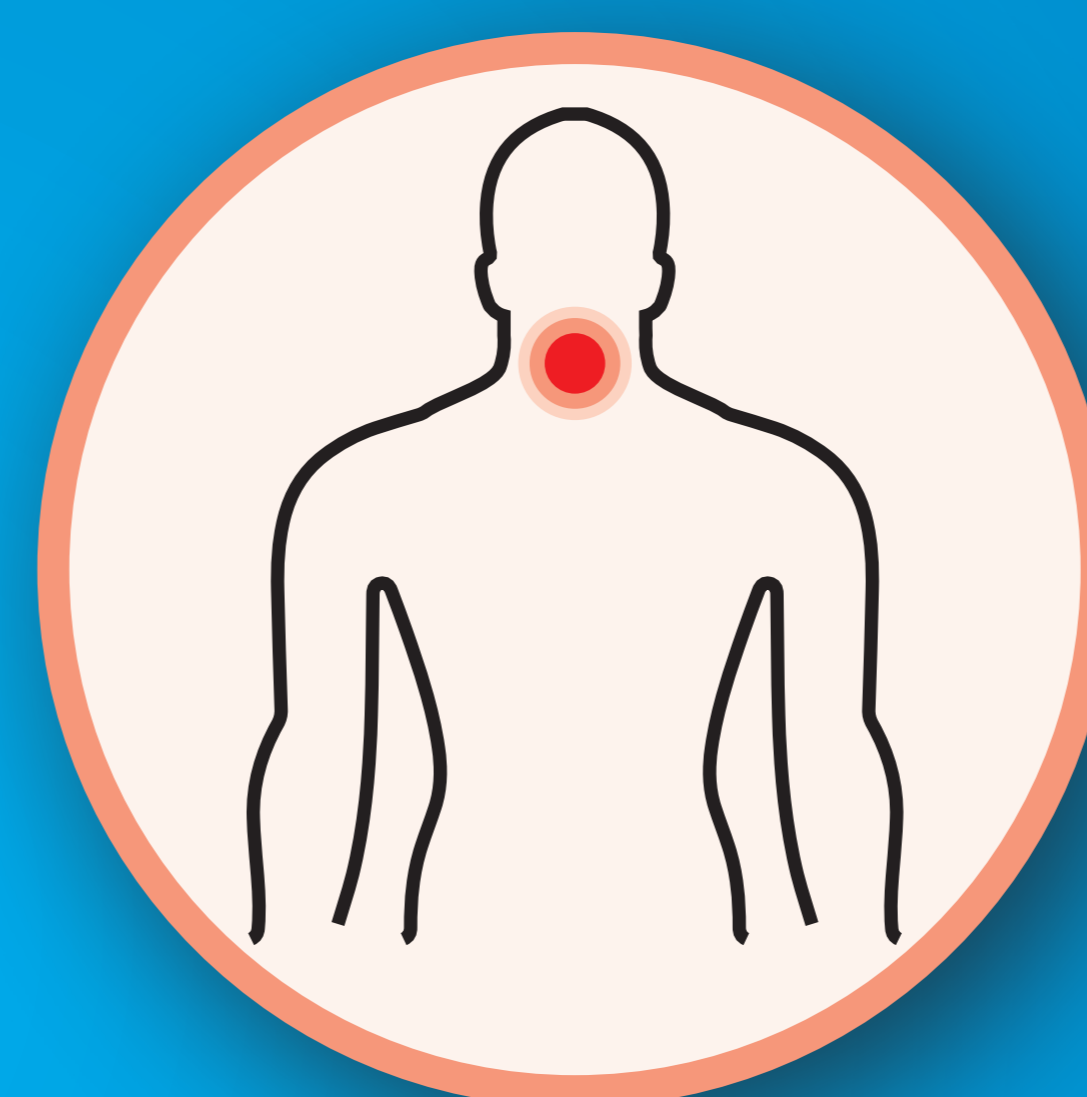
Mpox Symptoms can appear 2-21 days after infection



Skin Rash



Fever



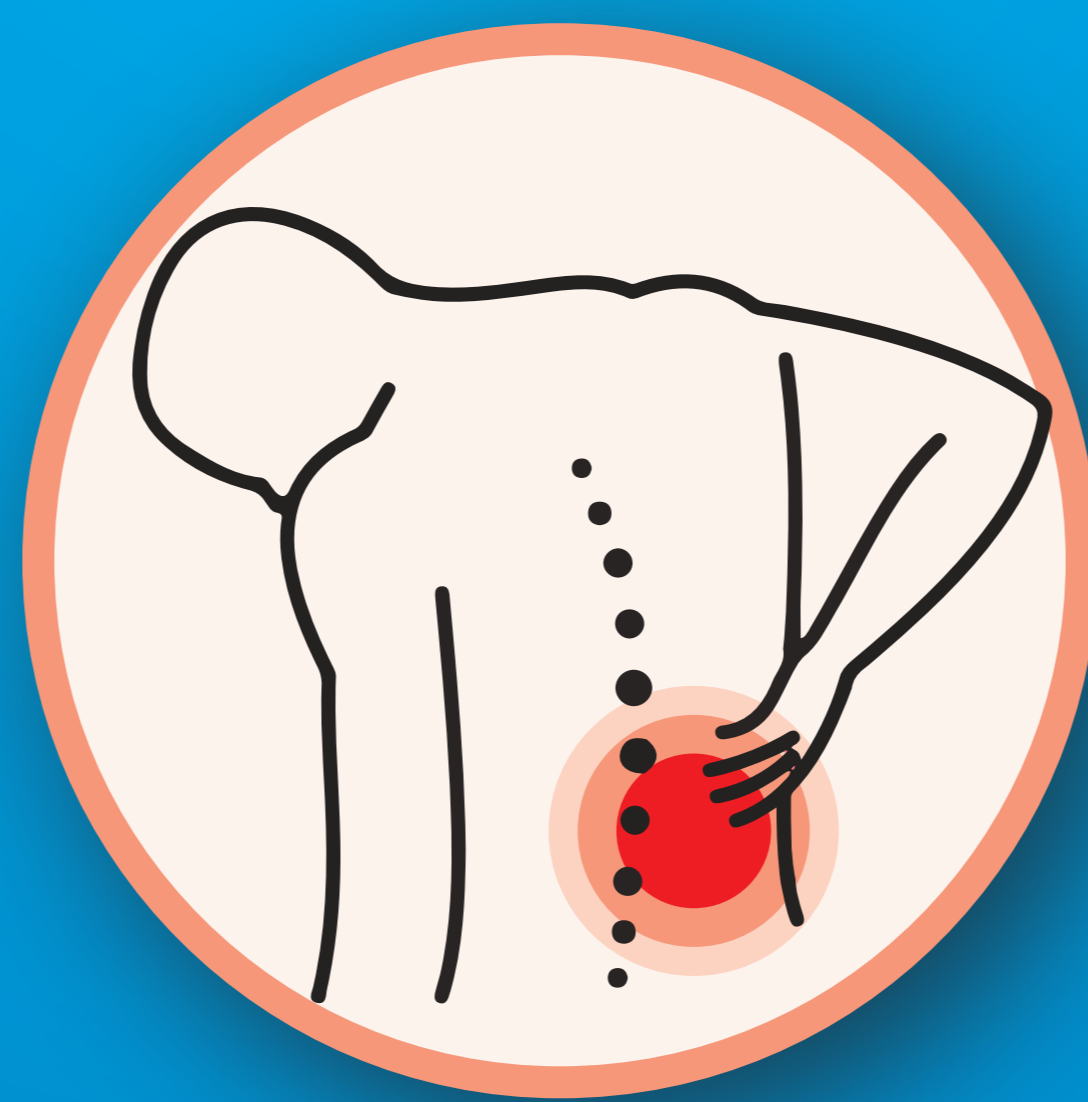
Sore Throat



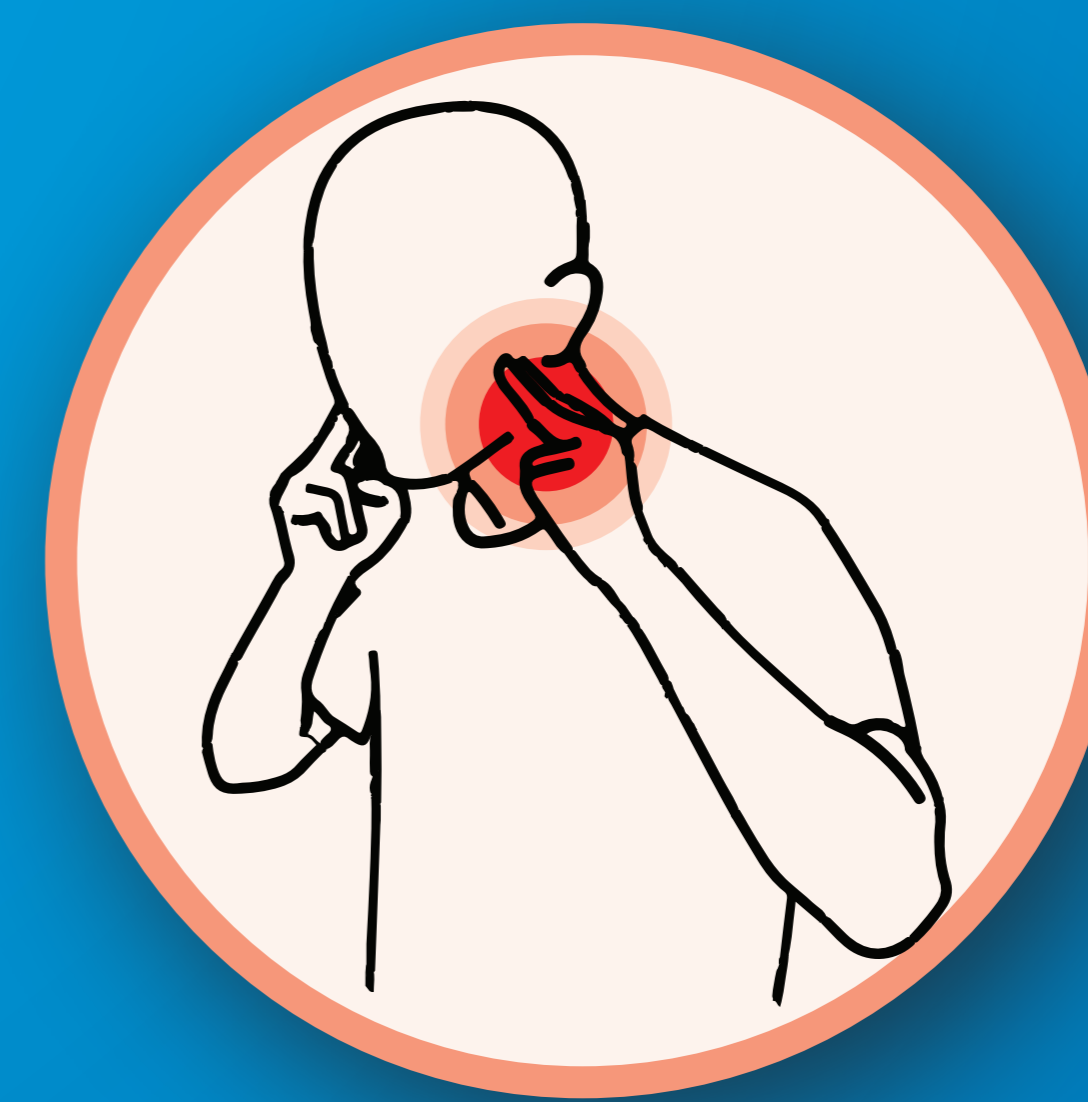
Headache



Body Aches



Back Pain

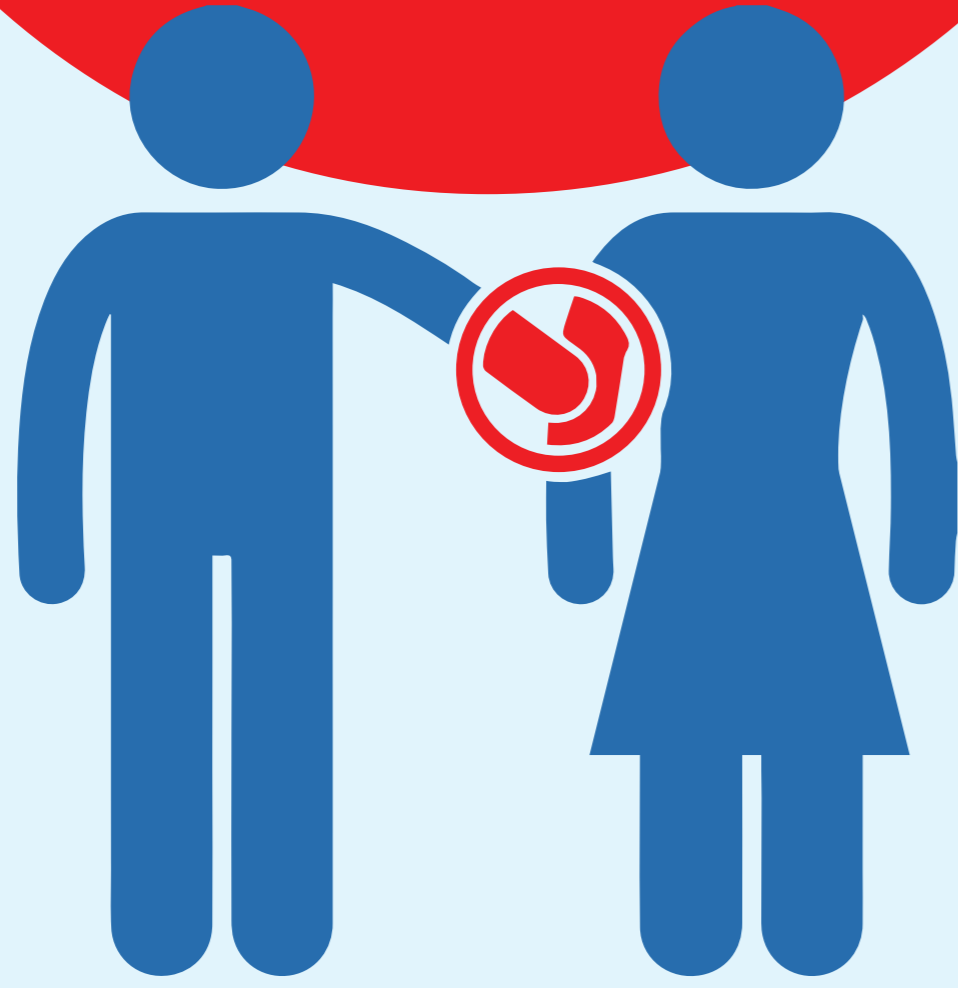


Swollen Lymph Nodes

If you experience any of these symptoms, seek urgent medical attention.

Mpox Preventive Measures

Avoid close contact with individuals having Mpox symptoms. Abstain or maintain only one sex partner



Avoid sharing personal items like towels, utensils or clothing



Wear protective gear if caring for someone with Mpox



Wash hands with soap and water or use hand sanitizer when soap is not available



Improve ventilation in shared spaces



Disinfect shared surfaces regularly





Ministry of Health

Mpox






is a viral disease transmitted through direct contact with infected persons including with their bodily fluids, contaminated personal items such as clothing, utensils or through sexual contact.



Mpox Symptoms such as Skin Rash, Fever, Sore Throat, Headache, Body Aches, Back Pain, and Swollen Lymph Nodes can appear 2-21 days after infection.

If you experience any of these symptoms, seek urgent medical attention.

For more information, contact the Ministry of Health hotline at: 719 or 0729 471414 / 0732 353535

    @MOH_Kenya  www.health.go.ke