

EBOLA

What is Ebola?

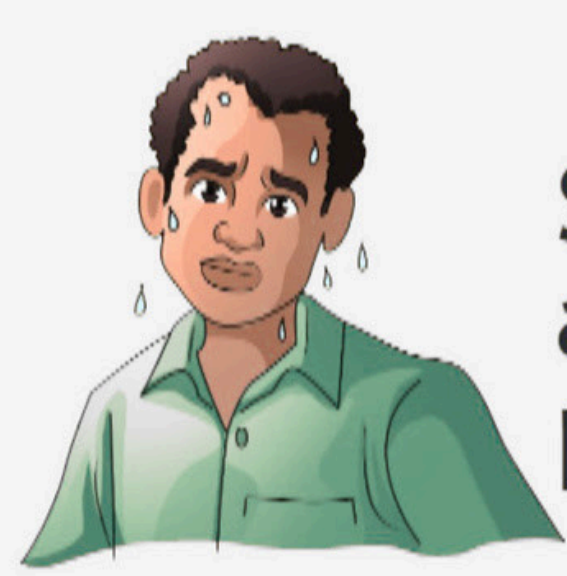
Ebola is a severe and often deadly disease caused by the Ebola virus.

A person can get the disease by direct contact with body fluids blood, saliva, urine, sweat, faeces, semen and vaginal fluids of an infected person.

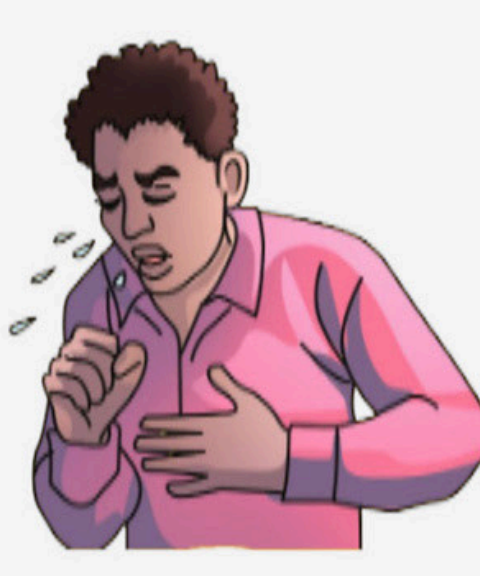


How does Ebola spread?

- Direct contact with body fluids like blood, saliva, vomits, stool, urine and secretion from wounds of a person suffering from Ebola.
- Contact with the soiled clothing or bed linens from a patient with Ebola.
- Infection is possible through handling of infected chimpanzees, gorillas and forest antelopes both dead or alive.



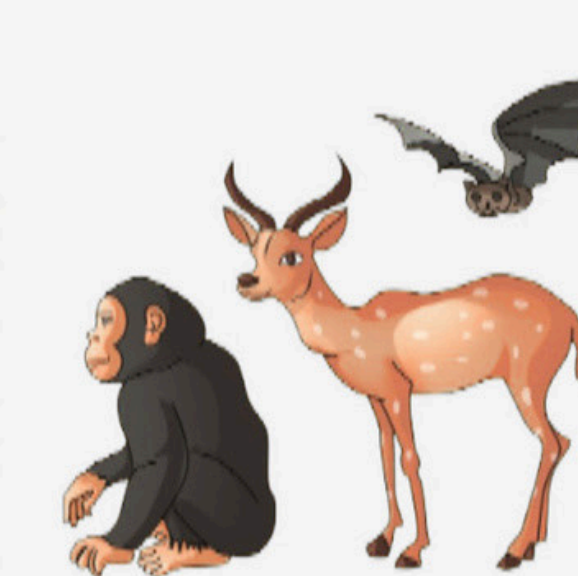
Sweat from an infected person



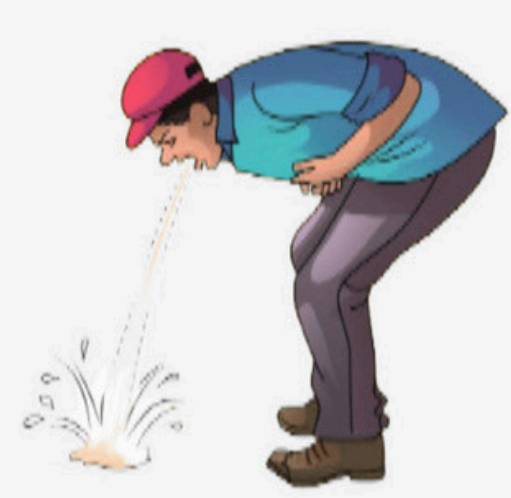
Saliva from an infected person



Urine from an infected person



Handling wildlife whether alive or dead



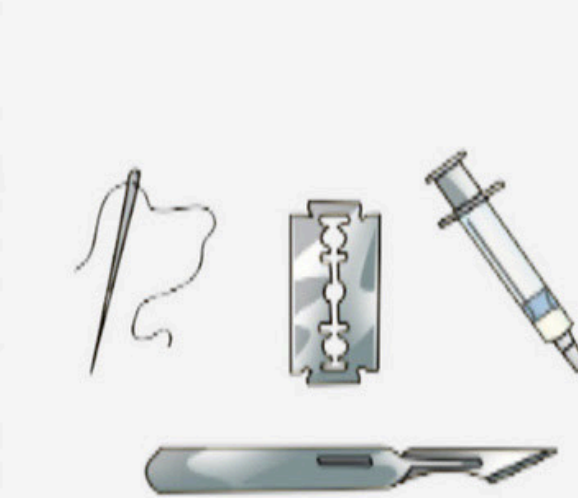
Vomit from an infected person



Blood and secretions from wounds from an infected person

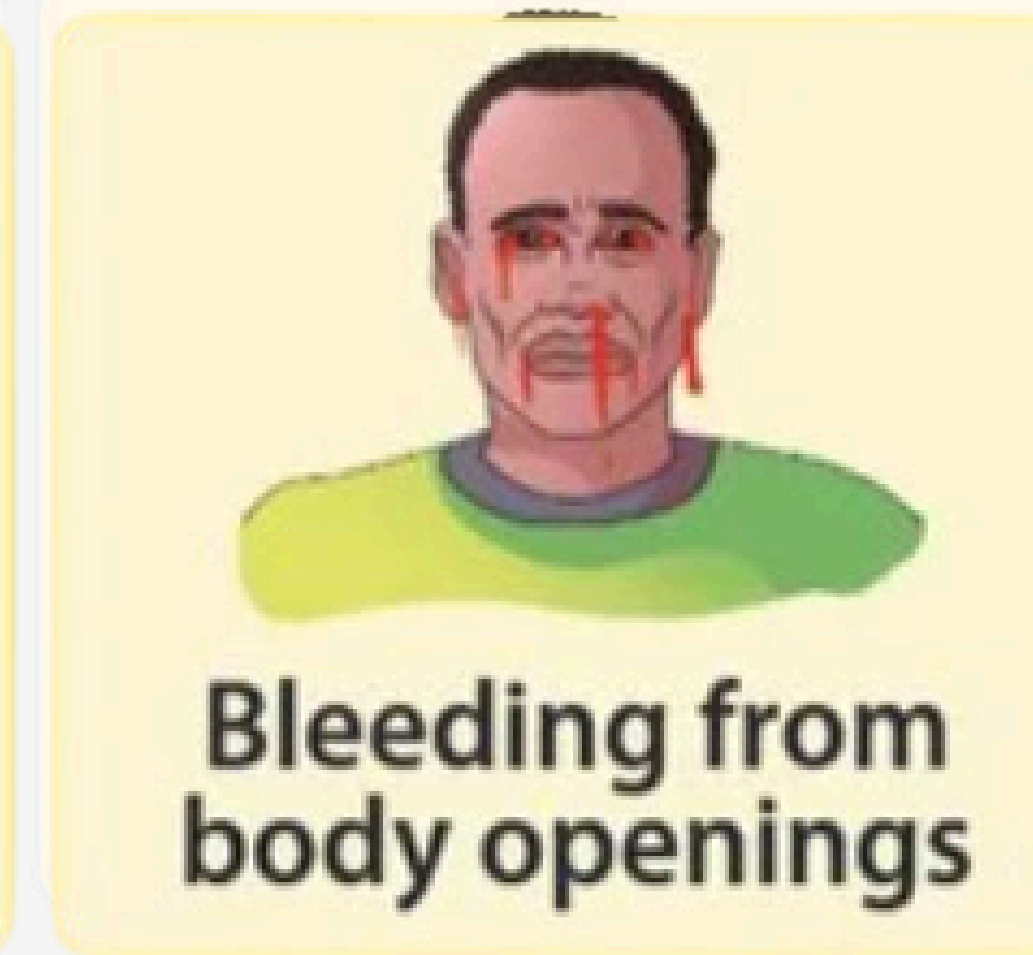
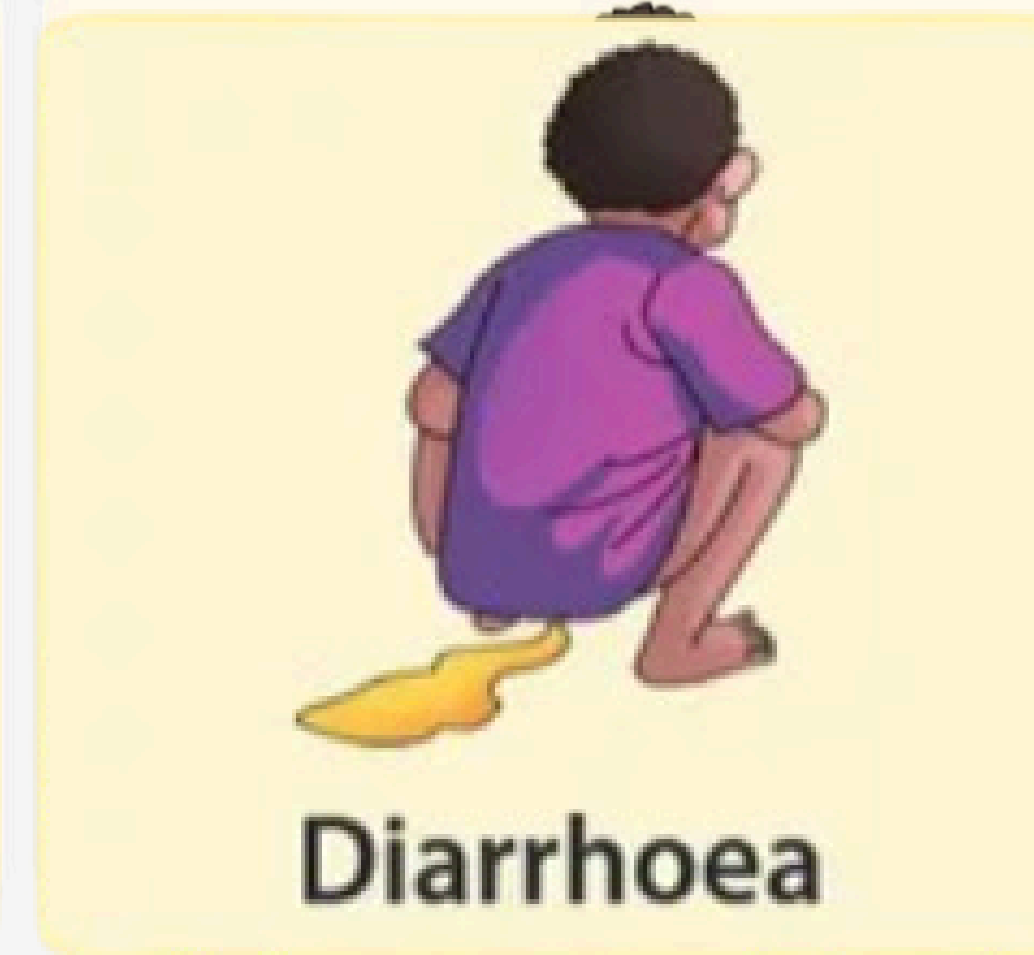
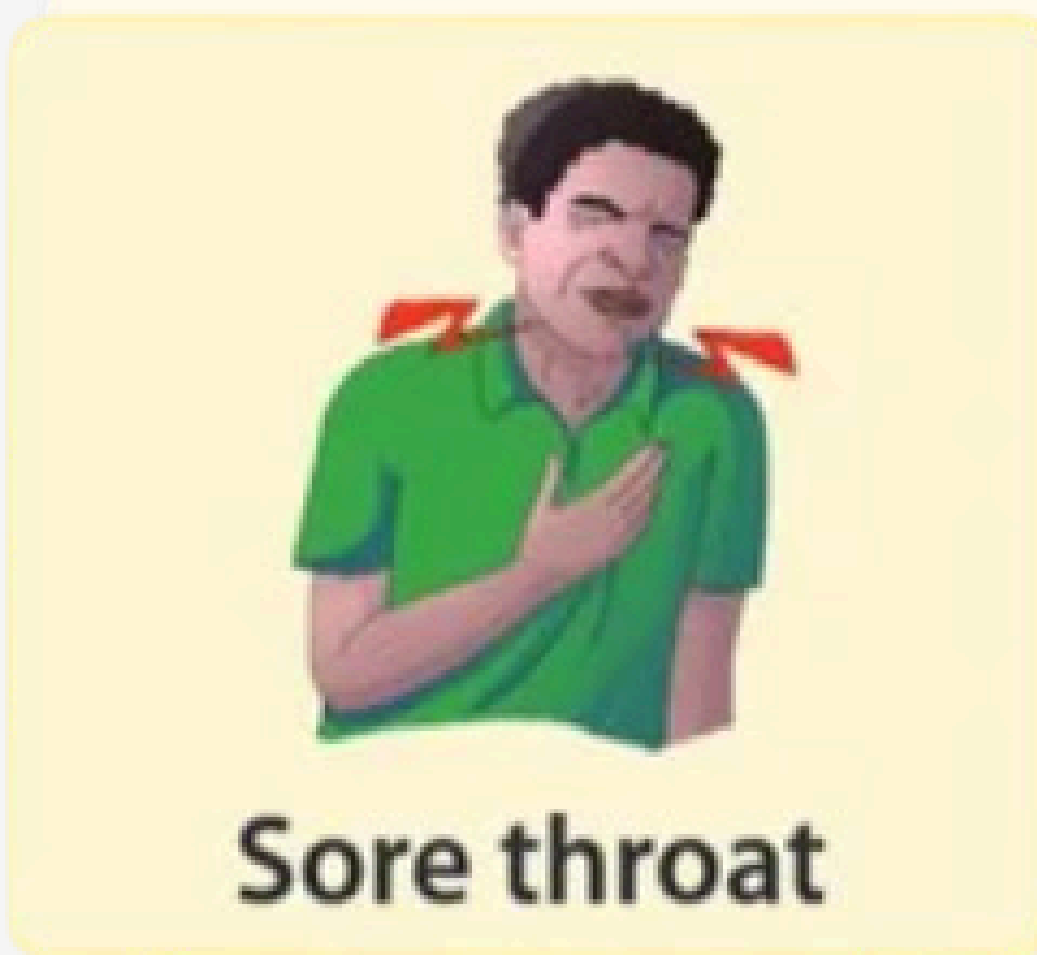
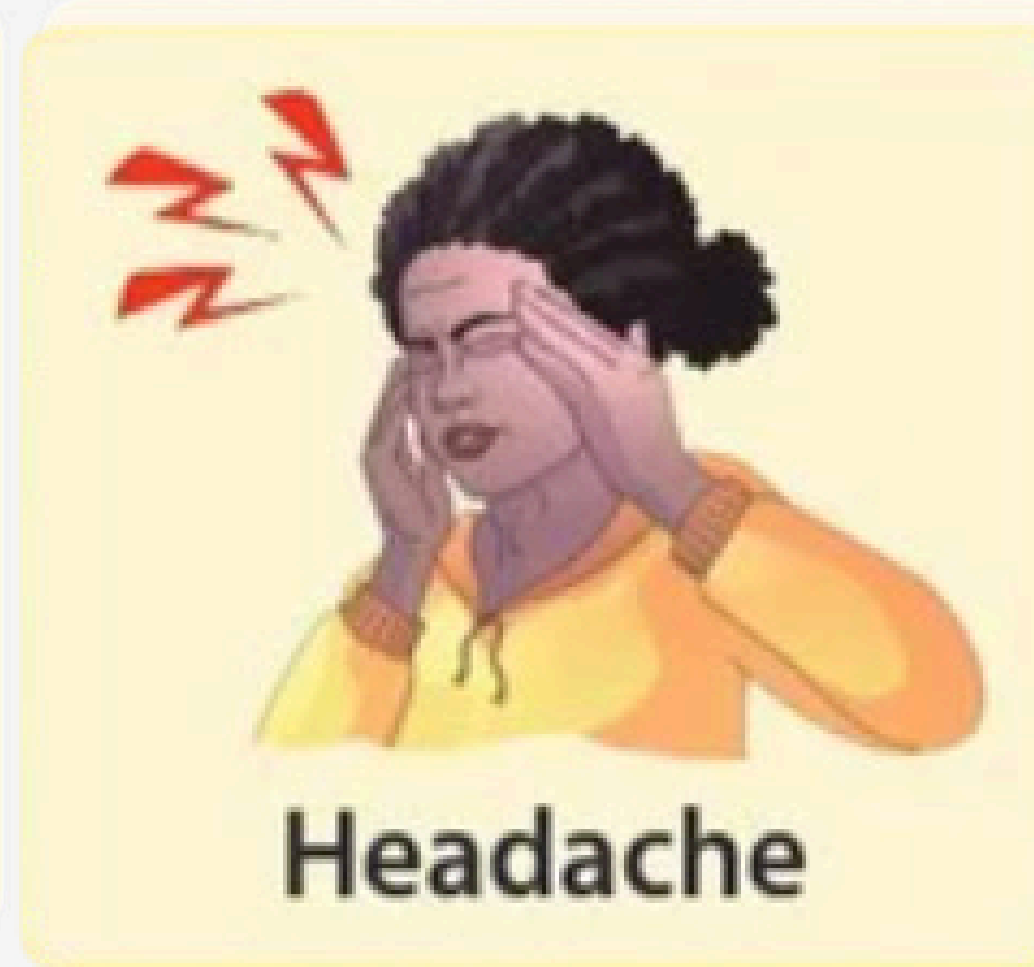


Soiled clothing of an infected person



Unsterilized equipment used by an infected person

Signs and symptoms of Ebola



Preventive measures



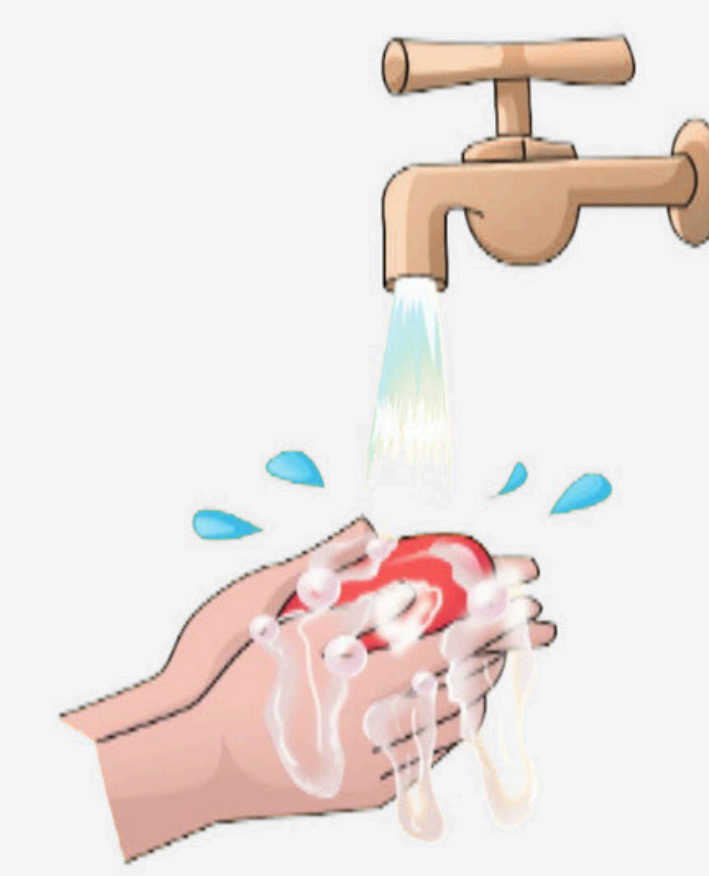
Avoid direct contact with body fluids of an infected person.



Safe burial of bodies by trained personnel and dignified burial rites as guided by the trained burial team.



Use Personal Protective materials when supporting and handling suspected or infected person. and/ or contaminated clothing, surfaces and environment.



In case you handle a person suspected to be infected with Ebola, **wash your hands thoroughly with soap and water** or use a hand sanitizer with at least **70% alcohol**.



Ebola Virus Disease (EVD) male survivors should abstain from **sexual activity** or **practise safe sex by using a condom** until they test negative for EVD. This would prevent them from infecting their partners as the virus can be transmitted through semen even after recovery.

Important note

Please report to the nearest public health facility for medical attention if you have visited/travelled an area reporting Ebola virus disease outbreak or you have been in contact with a person suspected to have Ebola or if you have any of the signs and symptoms in the last 21 days and you experience the above signs and symptoms.

NB: To learn more on Ebola Virus Disease, dial *719# or Chat with Jali on 0700719719